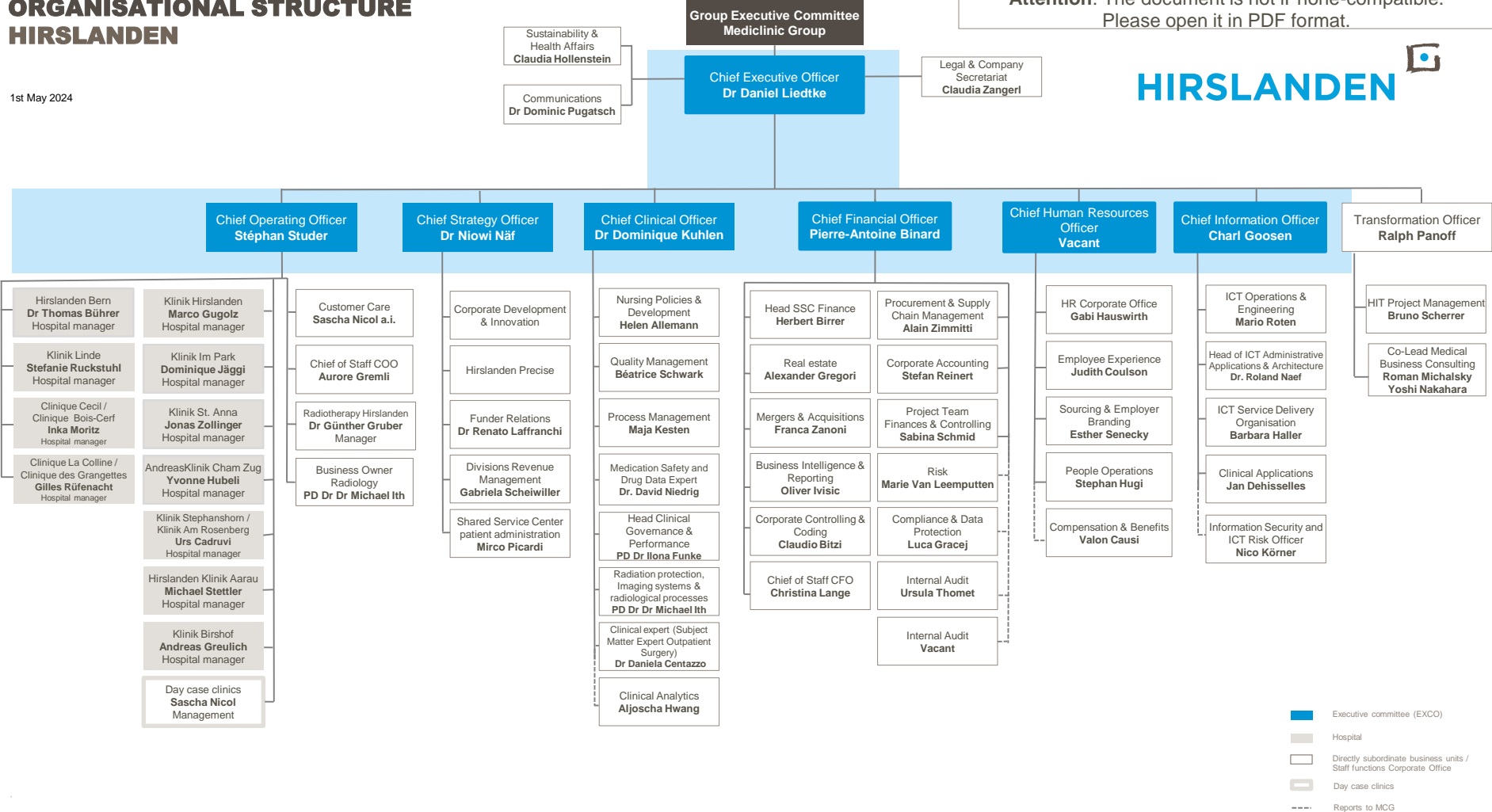


ORGANISATIONAL STRUCTURE HIRSLANDEN

1st May 2024

Attention: The document is not iPhone-compatible.
Please open it in PDF format.



- Executive committee (EXCO)
- Hospital
- Directly subordinate business units / Staff functions Corporate Office
- Day case clinics
- Reports to MCG

OVERVIEW OF NETWORKS HIRSLANDEN

1st May 2024

